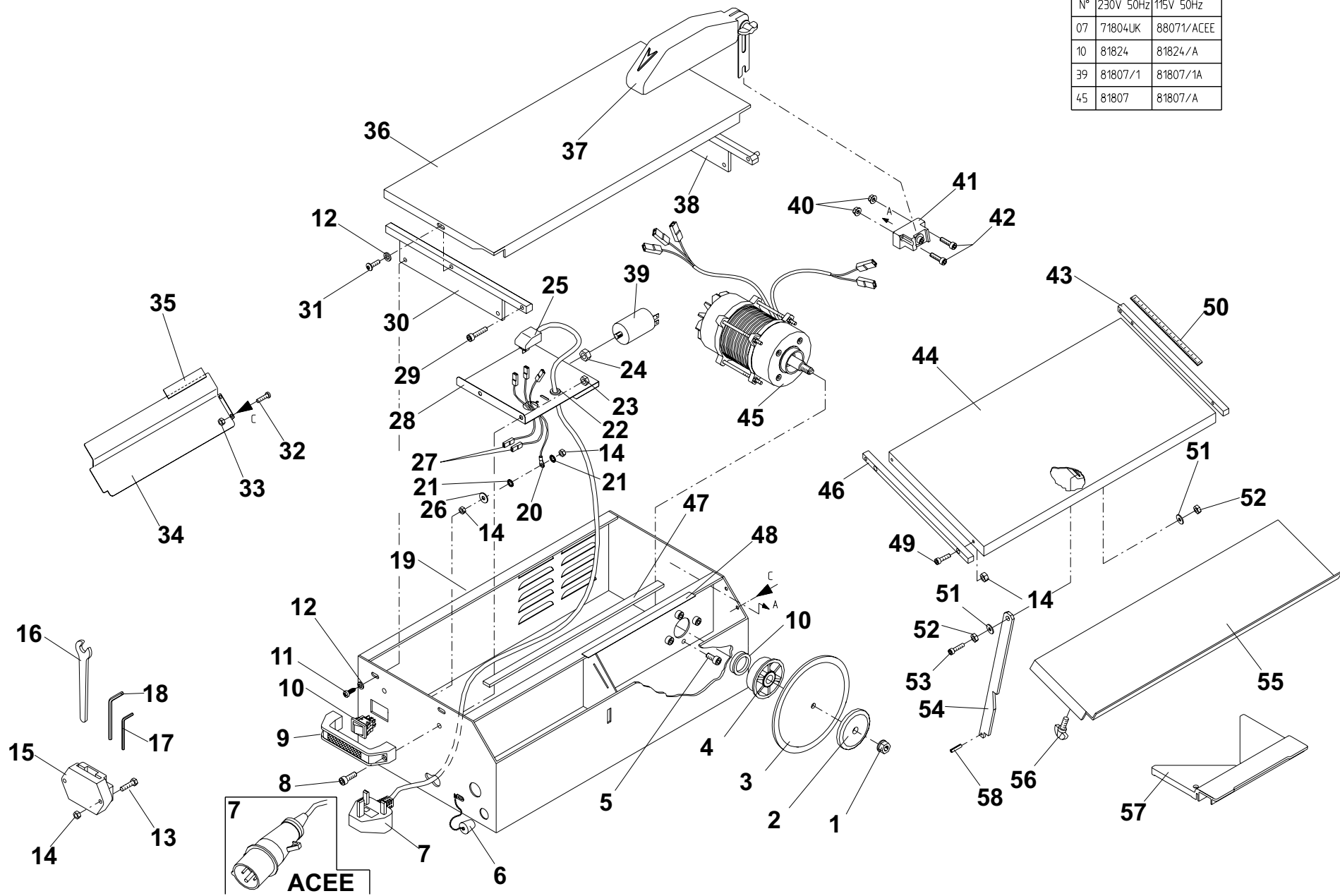


N°	230V 50Hz	115V 50Hz
07	71804UK	88071/ACEE
10	81824	81824/A
39	81807/1	81807/1A
45	81807	81807/A

38



Minitile 200

ITEM NUMBER ⁽¹⁾	PART NUMBER ⁽²⁾	DESCRIPTION ⁽³⁾
1	8/12002	NUT (M12)
2	156.0.042	EXTERNAL FLANGE
3	156.0.057	DIAMOND DISC (200MM X 25MM BORE)
4	156.0.041	INTERNAL FLANGE
5	156.0.040	SCREW (M6 X 8)
6	156.0.074	DRAIN PLUG
7	156.0.044	PLUG & CABLE - ACEE (110V)
7	156.0.052	PLUG & CABLE - UK (230V)
8	156.0.050	SCREW (M8 X 12)
9	156.0.051	HANDLE
10	156.0.092	SWITCH (115V)
10	156.0.075	SWITCH (230V)
11	156.0.076	SCREW (M6 X 10)
12	4/6001	WASHER (M6)
13	156.0.078	SCREW (M5 X 20)
14	156.0.046	NUT (M5)
15	156.0.069	TOOL HOLDER
16	156.0.070	HEXAGONAL KEY (M19)
17	156.0.079	HEXAGONAL KEY (M3)
18	156.0.110	HEXAGONAL KEY (M5)
19	156.0.061	STEEL BODY
20	156.0.080	EARTH LEAD
21	4/8006	WASHER (M8)
22	156.0.081	CABLE INSERT
23	8/8001	NUT (M8)
24	8/8001	NUT (M8)
25	156.0.082	TERMINAL BLOCK
26	156.0.083	WASHER (M5)
27	156.0.084	POWER CABLE
28	156.0.085	INTERNAL BASE PLATE
29	156.0.086	SCREW (M6 X 25)
30	156.0.072	LH SUPPORT - MOBILE TABLE
31	156.0.053	SCREW (M5 X 10)
32	156.0.093	SCREW (M4 X 6)
33	156.0.055	NUT M4
34	156.0.062	STEEL PROTECTION DISC
35	156.0.087	WATER SPRAY PROTECTOR
36	156.0.063	WORKING TABLE
37	156.0.034	DISC GUARD
38	156.0.071	RH SUPPORT - MOBILE TABLE
39	156.0.038	CAPACITOR (115V)
39	156.0.037	CAPACITOR (230V)
40	156.0.046	NUT (M5)
41	156.0.039	DISC GUARD SUPPORT BRACKET
42	156.0.049	SCREW (M5 X 16)
43	156.0.062	STEEL PROTECTION DISC
44	156.0.065	MOBILE TABLE
45	156.0.036	ELECTRIC MOTOR (115V 50HZ)
45	156.0.035	ELECTRIC MOTOR (230V 50HZ)
46	156.0.066	LATERAL THREADED MOBILE SUPPORT
47	156.0.073	WASHER
48	156.0.087	WATER SPRAY PROTECTOR
49	156.0.049	SCREW (M5 X 16)
50	156.0.088	SCALE MEASUREMENT
51	156.0.089	WASHER
52	156.0.047	NUT (M6)
53	156.0.090	SCREW (M6 X 22)
54	156.0.067	SUPPORT ROD - MOBILE TABLE
55	156.0.068	MOBILE TABLE EXTENSION
56	156.0.091	WING NUT
57	156.0.045	DIAGONAL FENCE
58	156.0.118	RUBBER PIN
59	156.0.019	V SEAL

⁽¹⁾ Item Number / numéro sur le schéma / número de la ilustración / número da ilustração / afbeeldingsnummer / tegningsnummeret / Teil-Nummer / numero dell'illustrazione

⁽²⁾ Part Number / Numéro de référence de la pièce / número de pieza / número da parte / stuknummer / Styknummer / Nummer auf der Abbildung / numero di parte

⁽³⁾ Description / Désignation / Descripción / Descrição / Omschrijving / Beskrivelse / Bezeichnung / Descrizione