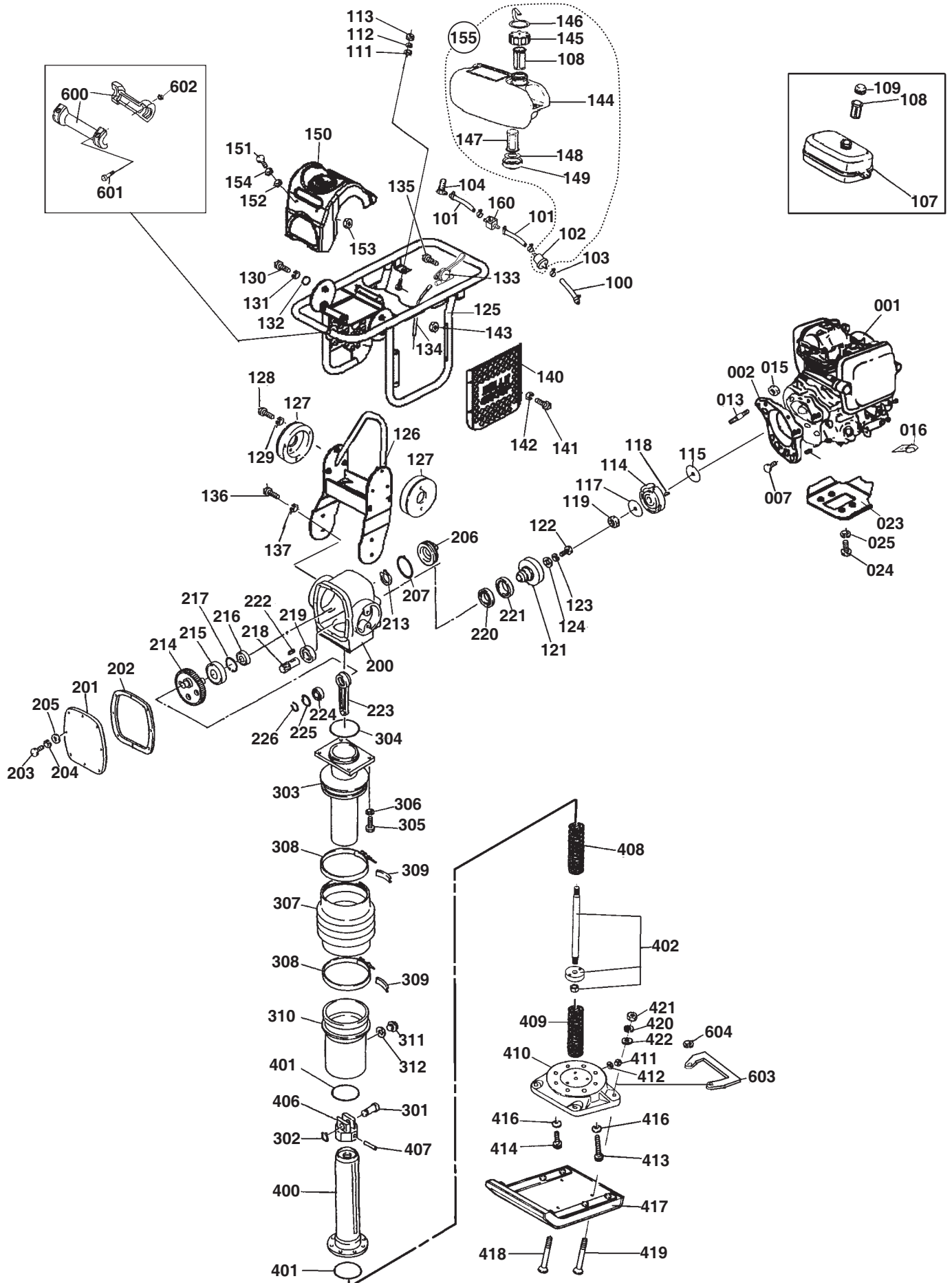


RT65



RT65

ITEM NUMBER ⁽¹⁾	PART NUMBER ⁽²⁾	DESCRIPTION ⁽³⁾	QTY ⁽⁴⁾
001	20/0068	Engine, Honda GX100KRM	1
002	158.0.101	Flange	1
003	158.0.102	Dowel Pin	4
007	9/8042	Flange Bolt, M8x40	4
013	00.5.063	Stud Bolt, M10x80	4
015	01.0.105	Nut, M10	4
016	15.0.082	Wire Clamp (RCT1006)	1
023	158/00300	Recoil Guard	1
024	00.0.019	Bolt, M8x30, 8T	4
025	05.1.005	Spring Washer, M8	4
100	158.0.009	Fuel Hose (L160)	1
101	158.0.003	Fuel Hose (L80)	2
102	21.0.327	Line Filter	1
103	15.0.085	Hose Clamp	6
104	158/99911	Banjo Fitting	1
106	15.0.289	O Ring, S16	1
107	158.0.063	Fuel Tank	1
108	158.0.011	Fuel Filter	1
109	158.0.012	Fuel Tank Cap	1
110	00.0.175	Bolt, M8x25, 4T	2
111	05.0.057	Washer, 25x8.5x1.6	2
112	05.1.005	Spring Washer, M8	2
113	01.0.104	Nylock Nut, M8	2
114	158.0.005	Centrifugal Clutch	1
115	158.0.006	Side Plate (A2, t=1.6mm)	1
117	158.0.007	Side Plate (B, t=1.0mm)	1
118	06.3.111	Woodruff Key	1
119	01.0.623	Nut, M12 Fine-Threaded	1
121	158.0.021	Clutch Housing	1
122	00.0.174	Bolt, M8x20, 8T	1
123	05.1.005	Spring Washer, M8	1
124	05.0.058	Washer, 25x8.5x3.2	1
125	158/00400	Operation Handle	1
126	158/00500	Handle Mount	1
127	158.0.070	Rubber Isolator for Handle	2
128	00.0.174	Bolt, M8x20, 8T	4
129	05.1.005	Spring Washer, M8	4
130	00.0.173	Bolt, M8x20, 4T	6
131	05.1.005	Spring Washer, M8	6
132	05.0.006	Washer, M8	6
133	19.0.962	Throttle Lever	1
134	158/00801	Throttle Wire	1
135	7/5007	SCREW CAP M5x16 CSK BLK	4
136	7/10016	SCREW CAP M10x30 BZP	4
137	4/1003	WASHER - M10 SPRING BZP	4
140	158/99917	Side Cover	1
141	02.0.012	Bolt	4
142	4/6001	Washer	4
143	8/6007	Nut	4
144	158.0.124	Fuel Tank	1
145	158.0.125	Fuel Cap	1
146	158.0.129	Strap	1
147	158.0.126	In-Tank Fuel Filter	1
148	158.0.127	Tank Seal	1
149	158.0.128	Tank Adapter	1
150	158/99901	Top Cover (Orange)	1
150	158/99914	Top Cover (Red)	1
150	158/99913	Top Cover (Yellow)	1
150	158/99922	Top Cover (White)	1
150	158/99923	Top Cover (Green)	1
151	7/6039	Bolt	4
152	4/6016	Rubber washer	4

⁽¹⁾ Item Number / numiro sur le schima / número de la ilustración / número da ilustranyo / afbeeldingsnummer / tegningsnummeret / Teil-Nummer / numero dell'illustrazione

⁽²⁾ Part Number / Numiro de rñference de la piñce / número de pieza / número da parte / stuknummer / Styknummer / Nummer auf der Abbildung / numero di parte

⁽³⁾ Description / Disignation / Descripción / Descripyo / Omschrijving / Beskrivelse / Bezeichnung / Descrizione

⁽⁴⁾ Quantity / Quantiti / Cantidad / Cantidade / Hoeveelheid / Mengen / Mžngde / Quantitü

RT65

ITEM NUMBER(1)	PART NUMBER(2)	DESCRIPTION(3)	QTY(4)
153	8/6022	Well Nut	4
154	4/6007	M6 form c washer	2
155	158/01000	Fuel Tank Rework Kit	1
160	158/99915	Fuel Shut-off Valve	1
200	158.0.029	Crankcase	1
201	158.0.030	Crank Case Cover	1
202	158.0.031	Packing	1
203	9/6017	Bolt, M6x20, 4T	8
204	05.1.004	Spring Washer, M6	8
205	05.0.002	Washer, M6	8
206	158.0.032	Shaft Cover	1
207	15.0.290	O Ring, P39	1
213	05.8.058	Snap Ring, S25	1
214	158.0.033	Crank Shaft	1
215	12.1.148	Bearing, 6207	1
216	12.1.151	Bearing, 6305LLU	1
217	05.8.060	Snap Ring, R62	1
218	158.0.034	Pinion Shaft	1
219	12.1.150	Bearing, 6204LLU	1
220	12.1.152	Bearing, 6907LLU	1
221	15.0.291	Oil Seal, TC40588	1
222	06.3.110	Key, 5x5x20	1
223	158.0.035	Connecting Rod	1
224	12.1.147	Bearing, 6204	1
225	05.8.059	Snap Ring, R47	1
226	05.8.057	Snap Ring, S20	1
301	158.0.036	Piston Pin	1
302	05.8.056	Snap Ring, S16	1
303	158.0.037	Guiding Cylinder	1
304	15.0.288	O Ring, G105	1
305	00.0.178	Bolt, M10x30, 4T	4
306	05.1.006	Spring Washer, M10	4
307	158.0.038	Bellows - Grey (Small)	1
307	158.0.121	Bellows - Red	1
308	158.0.040	Bellows Stop Band	2
309	158.0.039	Spacer	2
310	158.0.041	Protector	1
311	14.0.106	Oil Plug	1
312	158.0.042	Packing	1
400	158.0.043	Spring Cylinder	1
401	15.0.286	O Ring, G80	2
402	158.0.099	Ram Rod Complete	1
406	158.0.046	Guide Joint	1
407	06.1.020	Spring Pin, 6 x 45	1
408	19.0.092	Spring Complete, Upper	1
409	19.0.093	Spring Complete, Lower	1
410	158.0.105	Foot Stand Compl. (Aluminum)	1
411	158.0.106	Drain Plug, M12	1
412	158.0.109	Packing	1
413	07.0.055	Socket Head Bolt, M10x40, 10.9T	4
414	07.0.003	Socket Head Bolt, M10x25, 10.9T	4
416	05.3.072	Coned Disc Washer, M10	8
417	158.0.052	Ramming Shoe Complete	1
418	00.5.061	Square Flat Head Bolt, M12 x 69	2
419	00.5.062	Square Flat Head Bolt, M12 x 75	2
420	05.1.020	Spring Washer, M12	4
421	01.0.106	Nylock Nut, M12	4
422	4/12004	Washer, M12	2
600	158.0.008	Transport Roller Compl.	1
601	7/6003	Allen Bolt, M6x20	4
602	8/6017	Nylock Nut, M6	4
603	158/00702	Grab Handle	1
604	158/00706	Washer	2

(1) Item Number / numiro sur le schima / número de la ilustración / número da ilustração / afbeeldingsnummer / tegningsnummeret / Teil-Nummer / numero dell'illustrazione

(2) Part Number / Numiro de rñfrence de la piñce / número de pieza / número da parte / stuknummer / Styknummer / Nummer auf der Abbildung / numero di parte

(3) Description / Disignation / Descripción / Descrição / Omschrijving / Beskrivelse / Bezeichnung / Descrizione

(4) Quantity / Quantiti / Cantidad / Cantidade / Hoeveelheid / Mengen / Mžngde / Quantitü