

5.6 Long Term Storage

For storage or long periods of inactivity, Stephill Generators recommend the following:

Generators should be stored with oil filled to the correct capacity; Storage periods of 18 months and over may require special lubricants and treatments. If so please seek further advice from the engine manufacturer.

Before the generator is used after long term storage, all fuels and oils should be replaced.

Generator mounts, pipes and hoses should be checked to ensure that they are un-perished following extended periods of storage.

The generator should be stored in a clean dry area, ideally having a reasonable constant ambient temperature, and ideally not below freezing.

6 Service and Maintenance

IMPORTANT WARNING:

After any service on the generator, ensure that all piping and electrical cables are correctly routed and secured away from hot parts. Failure to observe this warning may result in damage to the piping and cables which could result in a fire.

Do not service or work on generator whilst the engine is running, and ensure the ignition key is removed.

6.1 Engine Service

Service the engine strictly in accordance with the instructions given in the relevant operator manual / handbook. An approved specialist must carry out any maintenance. Any spare parts required should be of genuine manufacturer's origin. Note: failure to adhere to manufacturer's recommended service schedules may invalidate the warranty. Please consult engine operator's manual for full service intervals.

6.2 Alternator Service

Brushless alternators employed on Stephill Generators are maintenance free. Service must be carried out by competent qualified personnel strictly in accordance with the instructions given in the handbook. Any spare parts required should be of genuine manufacturer's origin.

7 NAC Alternator Spares

Part No	Description
013-0090	Markon NAC Alternator
013-0074	PC Diode card
037-0015	Capacitor - 22µf

8 Yanmar Consumable Spares

Part No	Description
029-0007	Air filter
022-1013	Fuel filter
029-0032	Oil filter

9 Spares SE6000D

Part Number	Description	Qty
027-0013	Engine mount	2
027-0014	Alternator mount	2
027-0022	Wheel	2
027-0023	Wheel cap	2
022-1024	Fuel tank kit	1
022-1003	50mm Fuel tank gasket	1
022-1016	Fuel filter assembly	1
022-1013	Fuel filter	1
022-1005	Cooling fan 6" 8mm bore	1
022-1004	Temperature switch	1
020-0128	Temperature switch plate	1
022-1015	Low fuel sensor	1
022-1001	Neoprene door seal	1
022-1023	Panel fixing set	1
022-1017	Toggle latch strike	1
022-1018	Toggle latch	1
014-1004	Pocket pull flush	1
022-0555	SE6000D4 Silencer kit	1
022-0563	SE6000D4 Silencer	1
022-0501	SE6000D4 Tail pipe	1
055-0006	Hours run meter	1
036-0039	MCB Cover	1
036-0009	Circuit breaker 20Amp 2pole	1
036-0050	Re-set button 20Amp	1
044-0001	SOCKET 115V 16Amp	2
044-0002	SOCKET 230V 16Amp	2
044-0003	SOCKET 115V 32Amp	1
043-0006	Voltage selector switch	1
045-0012	Battery warning lamp	1
045-0013	Low fuel warning lamp	1
045-0016	Low oil warning lamp	1
045-0014	High engine temperature warning light	1
045-0001	Key switch	1
045-0017	Bulb	4
056-0001	Relay-5pin 12V DC	3

10 WARRANTY

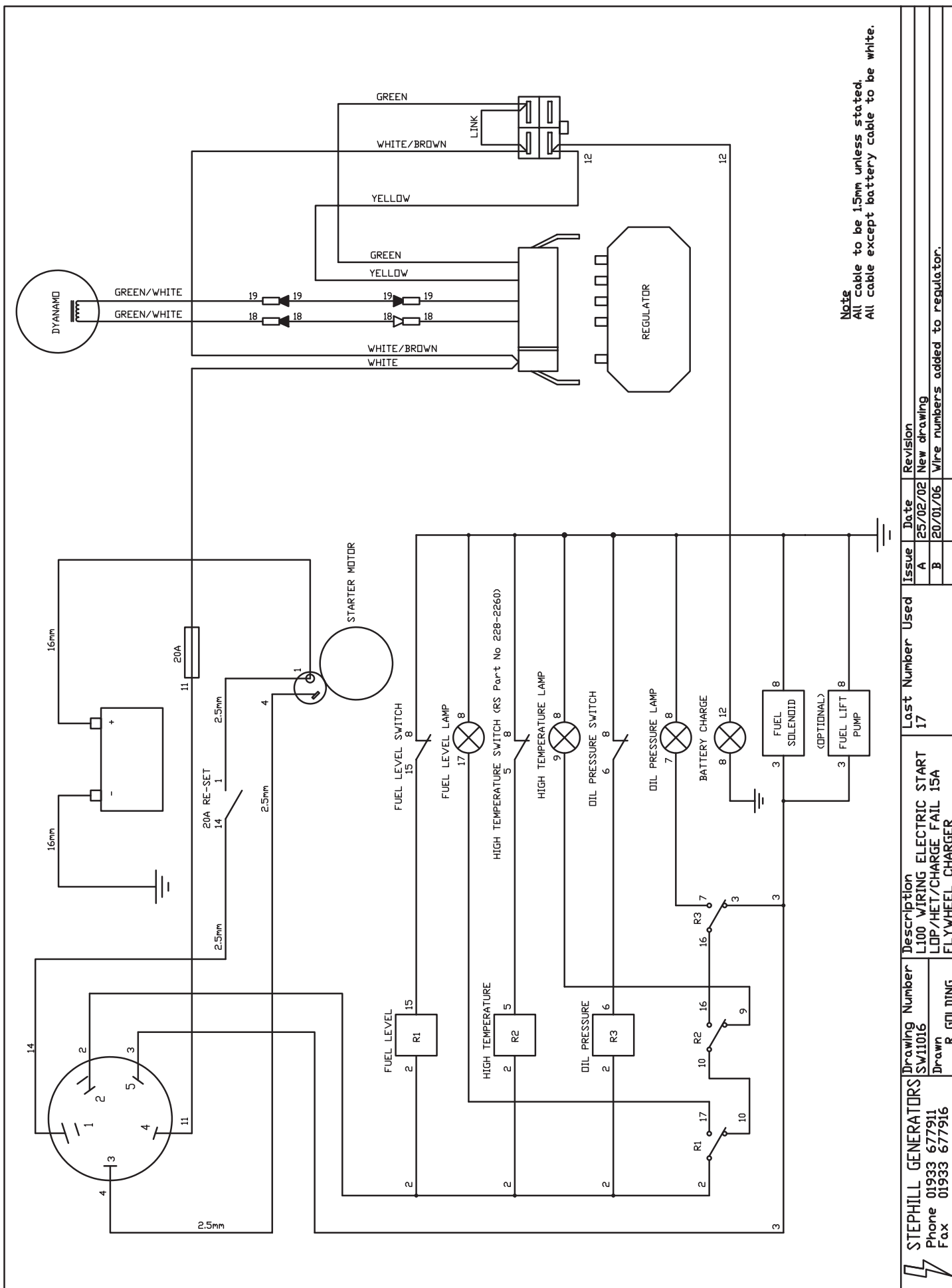
This generator supplied by STEPHILL GENERATORS LTD carries a warranty of 12 months from date of despatch or 2000 Hours. During the warranty period, should the plant fail due to faulty design, materials or workmanship by STEPHILL or its sub-contractors, we undertake to rectify the fault.

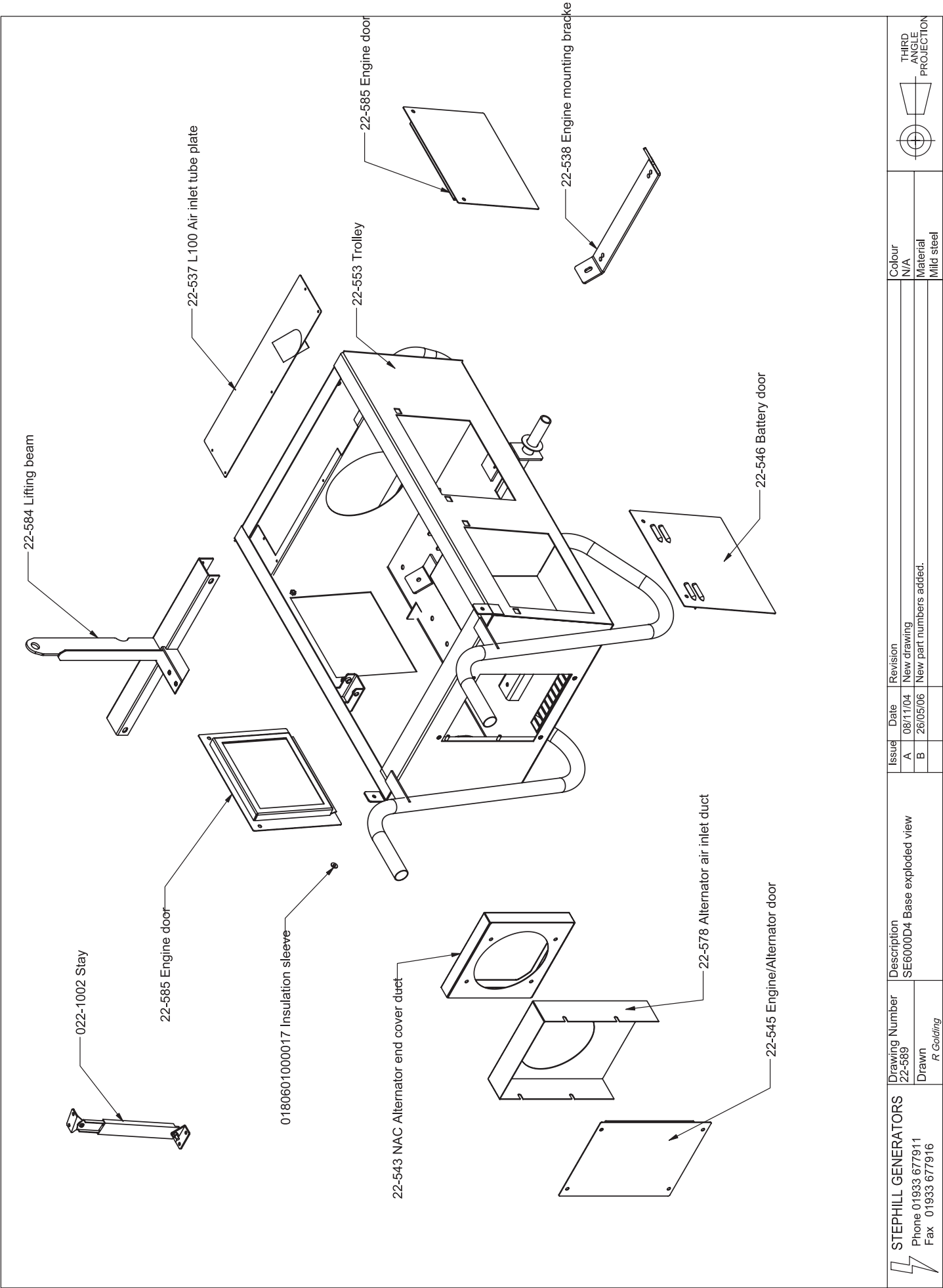
STEPHILL will accept no responsibility whatsoever for equipment that has failed due to;

- Operation with incorrect fuel, lubricating oil or no water.
- Improper repair or use of parts not supplied by STEPHILL.
- Lack of, or incorrect maintenance.
- Fair wear and tear, misuse, negligence, accidental damage, improper
- storage, incorrect starting / warm-up / run-in or shutdown.

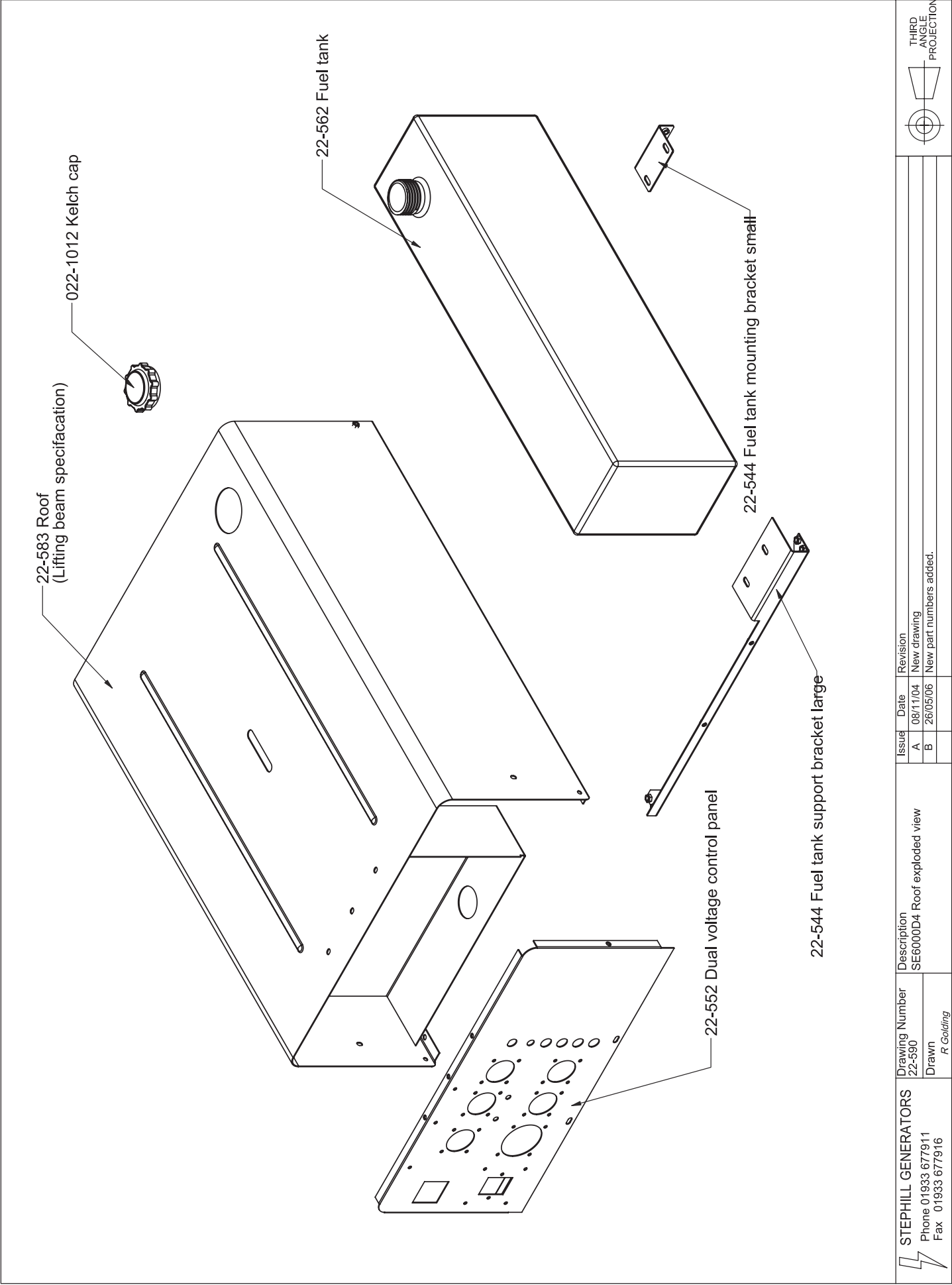
No warranty claim will be considered by STEPHILL unless any defective parts are available for inspection by us, or our nominees, to determine the reason or cause of failure, and STEPHILL is given the option of repair or replacement.


STEPHILL are not responsible for incidental or consequential damages, downtime, or other costs due to warrantable failure, and unauthorised alterations made to any product supplied by STEPHILL.





 STEPHILL GENERATORS Phone 01933 677911 Fax 01933 677916	Drawing Number 22-589 Drawn R. Golding	Description SE6000D4 Base exploded view	Issue	Date	Revision	Colour	 THIRD ANGLE PROJECTION
			A	08/11/04	New drawing	N/A	
			B	26/05/06	New part numbers added.	Material Mild steel	



 STEPHILL GENERATORS Phone 01933 677911 Fax 01933 677916	Drawing Number 22-590	Description SE6000D4 Roof exploded view	Issue	Date	Revision
			A	08/11/04	New drawing
	B		26/05/06	New part numbers added.	
			THIRD ANGLE PROJECTION		